



# Around Radlett

Autumn/Winter 2019

# 121



Photo of Scrubbitts Wood, Gills Hill, Radlett

## Chairman's Message



Councillor  
Garry Walton

Dear Parishioners,

At our first full council meeting following the May elections, I was very surprised to be nominated and elected as Chairman of the council by my fellow councillors. It is a role I never imagined I would hold, I feel extremely honoured to be given the post and will do my best to uphold the very high standards set by the previous holders of the post. I have been a member of the council for a long time serving under 5 different holders of the chairman's position. These previous Chairmen have set very high standards.

Our new council has seen a large change in its members. At the last election six councillors stood down, for various reasons. This means that half of the council members are new. I am very pleased to be able to report that our new members have already demonstrated their considerable expertise and dedication to serving our community. I believe the council is in good hands.

I was saddened to hear the news that Ron Worthy had died. Ron was one of the previous chairmen of the council under which I served. He, literally, spent his entire life serving our community, and was probably the most well-known character in the Parish. He will be greatly missed.

My main role on the council over the years has been on our Open Spaces committee. I think we are extremely fortunate, as a council, to own so much land that can be used for recreational purposes. The council strives to improve the community use of our Open Spaces, there always seems to be plans to improve or change an area. We always appreciate ideas and suggestions on how our Open Spaces can be improved. The latest

improvement has been in Scrubbits Wood, thanks to a dedicated team of local residents much work has been carried out to open up paths to enable people to walk through the woods and enjoy them. My sincere thanks to the Friends of Scrubbits Wood group.

We are at the end of the summer. During the school holidays the council's Community Development committee have organised many activity events for local children. These have been well attended and a great success.

After what seems like a very long time and huge amounts of work by members of the Radlett Neighbourhood Plan working parties and in particular the Steering Group, we are now nearing the final stages of implementing the Radlett Neighbourhood Plan. This will enable the Parish Council to have a far greater say in local Planning matters. The Radlett Neighbourhood Plan has been sent for an independent examination by a planning inspector well versed in Neighbourhood Plans. He has looked at the Radlett Neighbourhood Plan and had some questions which he asked at a public examination in mid-October. If he is satisfied with the answers given and the plan overall he will recommend it for a referendum when it will be put it to all residents of Radlett for approval by voting either for or against the plan. This will hopefully be held towards the end of this year.



*Cllr Garry Walton  
Chairman  
Aldenham Parish Council*

### Parish Council Offices

**Aldenham Parish Council, 1st Floor, The Radlett Centre, Radlett. Tel: 01923 856433**

All parish councillors can be contacted through the council office.

Office Opening Hours: **Monday to Friday 10am-2.30pm**

Outside these hours, in case of emergency please contact **07833 251 115**.

Email addresses for the officers are:

**Peter Evans** Parish Council Manager

**manager@aldenham-pc.gov.uk**

**Monika Duong** Assistant Manager

**accounts@aldenham-pc.gov.uk**

**Paula Paley** Planning Officer

**planning@aldenham-pc.gov.uk**

**Wendy McLean** Open Spaces Officer

**openspaces@aldenham-pc.gov.uk**

**Manisha Kotecha** Community Development Officer

**community@aldenham-pc.gov.uk**



# ALDENHAM PARISH COUNCIL

[www.aldenham-pc.gov.uk](http://www.aldenham-pc.gov.uk)

Each Aldenhams Parish Councillor has their own email address as follows:

## ALDENHAM EAST



**Councillor Jackie Lefton –**  
[cllr.jackie.lefton@aldenham-pc.gov.uk](mailto:cllr.jackie.lefton@aldenham-pc.gov.uk)  
Vice Chairman of Council  
Member of Planning Committee  
Member of Community Development Committee  
Member of Finance and General Purposes Committee



**Councillor Dermot Wickham –**  
[cllr.dermot.wickham@aldenham-pc.gov.uk](mailto:cllr.dermot.wickham@aldenham-pc.gov.uk)  
Vice Chairman of Finance and General Purposes Committee  
Member of Open Spaces Committee



**Councillor Saleem Khawaja –**  
[cllr.saleem.khawaja@aldenham-pc.gov.uk](mailto:cllr.saleem.khawaja@aldenham-pc.gov.uk)  
Chairman of Planning Committee  
Member of Open Spaces Committee  
Member of Finance and General Purposes Committee



**Councillor Catherine Kilhams –**  
[cllr.catherine.kilhams@aldenham-pc.gov.uk](mailto:cllr.catherine.kilhams@aldenham-pc.gov.uk)  
Vice Chairman of Open Spaces Committee  
Member of Community Development Committee



**Councillor Helen Jones –**  
[cllr.helen.jones@aldenham-pc.gov.uk](mailto:cllr.helen.jones@aldenham-pc.gov.uk)  
Member of Planning Committee  
Member of Open Spaces Committee



**Councillor Przemek De Skuba –**  
[cllr.przemek.de.skuba@aldenham-pc.gov.uk](mailto:cllr.przemek.de.skuba@aldenham-pc.gov.uk)  
Member of Planning Committee  
Member of Open Spaces Committee

## ALDENHAM WEST



**Councillor Garry Walton –**  
[cllr.garry.walton@aldenham-pc.gov.uk](mailto:cllr.garry.walton@aldenham-pc.gov.uk)  
Chairman of Council  
Chairman of Open Spaces Committee  
Member of Finance and General Purposes Committee



**Councillor Ben Evans –**  
[cllr.ben.evans@aldenham-pc.gov.uk](mailto:cllr.ben.evans@aldenham-pc.gov.uk)  
Member of Community Development Committee



**Councillor David Lambert –**  
[cllr.david.lambert@aldenham-pc.gov.uk](mailto:cllr.david.lambert@aldenham-pc.gov.uk)  
Member of Finance and General Purposes Committee



**Councillor Estelle Samuelson –**  
[cllr.estelle.samuelson@aldenham-pc.gov.uk](mailto:cllr.estelle.samuelson@aldenham-pc.gov.uk)  
Chairman of Community Development Committee  
Vice Chairman of Planning Committee  
Member of Finance and General Purposes Committee



**Councillor Alison Rubinson –**  
[cllr.alison.rubinson@aldenham-pc.gov.uk](mailto:cllr.alison.rubinson@aldenham-pc.gov.uk)  
Member of Planning Committee  
Member of Open Spaces Committee



**Councillor Mark Cherry –**  
[cllr.mark.cherry@aldenham-pc.gov.uk](mailto:cllr.mark.cherry@aldenham-pc.gov.uk)  
Chair of Finance and General Purposes Committee  
Member of Planning Committee

## Forthcoming Committee Meetings October 2019 – March 2020

All meetings are held  
at 7:30pm

### November

4th Nov	Planning
11th Nov	Open Spaces
18th Nov	Planning
25th Nov	Full Council

### December

2nd Dec	Planning
9th Dec	Community Development
16th Dec	Planning
23rd Dec	Full Council

### January

6th Jan	Planning
13th Jan	Finance & General Purposes
20th Jan	Planning
27th Jan	Full Council

### February

3rd Feb	Planning
10th Feb	Open Spaces
17th Feb	Planning
24th Feb	Full Council

### March

2nd Mar	Planning
9th Mar	Community Development
16th Mar	Planning
23rd Mar	Full Council
30th Mar	Annual Parish Meeting

### Oliver Dowden, MP for Hertsmere

Your local MP Oliver Dowden holds regular surgeries around the constituency. If you would like to arrange an appointment then please call  
**020 7219 6239** or email: [oliver@oliverdowden.com](mailto:oliver@oliverdowden.com)



### Hertsmere Borough Council

**Aldenhams East**  
Councillor John Graham  
[cllr.john.graham@hertsmere.gov.uk](mailto:cllr.john.graham@hertsmere.gov.uk)  
Councillor Lucy Selby  
[cllr.lucy.selby@hertsmere.gov.uk](mailto:cllr.lucy.selby@hertsmere.gov.uk)

**Aldenhams West**  
Councillor David Lambert  
[cllr.david.lambert@hertsmere.gov.uk](mailto:cllr.david.lambert@hertsmere.gov.uk)  
Councillor Caroline Clapper  
[cllr.caroline.clapper@hertsmere.gov.uk](mailto:cllr.caroline.clapper@hertsmere.gov.uk)

**Hertfordshire County Council**  
Councillor Caroline Clapper  
[caroline.clapper@hertfordshire.gov.uk](mailto:caroline.clapper@hertfordshire.gov.uk)

Minutes from the Committee meetings are uploaded to the website once they have been approved and signed by the Chairman of the relevant committee.

Please see all dates, agendas and minutes for Council meetings on [www.aldenham-pc.gov.uk](http://www.aldenham-pc.gov.uk)

### DISCLAIMER

The articles contained in this edition are the authors own. No responsibility can be accepted for errors or omissions.

All copy correct at the time of going to press. Edited and Produced by Aldenhams Parish Council, The Radlett Centre, Aldenhams Avenue, Radlett, WD7 8HL





## Festival of Culture in Radlett 2020 – save the dates: 4th – 6th June 2020

2020 has been designated the Hertfordshire Year of Culture which is aimed to showcase Hertfordshire as a county of creative and cultural opportunity with a year long programme of events. Aldenham Parish Council is keen for Radlett to be part of this initiative and planning is now in full swing for the Festival of Culture in Radlett 2020 which will be held in the village throughout the day and evening on Saturday 6th June with a launch event on Thursday 4th June.

The aim of the this event is to provide cultural entertainment in the form of live, popular and classical music, book readings, film screenings, theatre and comedy performances, art, dance and children's entertainment in as many venues as possible along Radlett's High Street. It is envisaged that the day will run from morning to late at night, creating a vibrant and enjoyable festival atmosphere, appealing to a broad range of ages and tastes.

A variety of venues will be used to host different events and we are also hoping that many of the local cafes and restaurants will be keen to be part of the festival programme. Prior to the launch of the Festival of Culture in Radlett 2020, a literary competition will be run involving local schools and children of all ages. The successful children will be invited to an event at the Radlett Centre and be able to perform their winning entries in front of family and friends.

The Festival of Culture will be a unique and high profile event for Radlett and one which we envisage attracting a great number of people to the village to enjoy the entertainment and activities on offer.

Should you wish to be involved in the Festival programme or if you have any questions, please contact either Ben Evans, Chair ([cldr.ben.evans@aldenham-pc.gov.uk](mailto:cldr.ben.evans@aldenham-pc.gov.uk)) or Manisha Kotecha, Community Development Officer ([community@aldenham-pc.gov.uk](mailto:community@aldenham-pc.gov.uk)).

## *Friends of Scrubbitt's Wood*

Summer saw a quieter time in the wood, as we leave the undergrowth and the resident nesting birds undisturbed. Instead we have used the time to build birdboxes for next year, socialise at our second annual Summer Picnic and deep clean the litter that is unfortunately dropped in the wood. It also gave us an opportunity to plan our winter work schedule that began in September and will see us through to next summer.

Our plans for this winter season include continued removal of the invasive snowberries that we started last year; they are spread all through the wood and grow quickly so this is something we regularly have to tackle. We also plan to remove more holly, as this crowds out other species in the undergrowth and makes the wood much darker.

In October, a specialist group of volunteers with the Countryside Management Service came in with their chainsaws to remove some of the invasive laurel trees. Once these were cut down, the Open Spaces team from Aldenham Parish Council came in and chipped the stacks of wood left behind. Our valiant volunteers spread the massive mounds of wood chips over the paths, to help keep the paths dry and accessible all year round. As well as removing an invasive species and improving the pathways using the by-products, it was nice to see so many different organisations working together so efficiently.

We are hoping to get installed new information boards at the entrances to the wood and have approached Aldenham

Parish Council regarding this. This will hopefully give us the opportunity to display a little of the history of the wood, update wood users about events that are planned, as well as give information on seasonal plants and birds to look and listen out for.

We are planning to hold an Edwardian Fete in April, celebrating the 110th Anniversary of the gifting of the wood to the people of Aldenham Parish. For as Mr Breeds, vice chair of the council in 1910 put it.

He felt sure that future generations, when the whole of Radlett district was covered with buildings, would thank Mr Philimore for his generous gift, and applaud the action of the Parish Council of the day in accepting it.

We are planning games, arts and crafts and activities to explore the wood, as well as a brass band, informative talks and a well-stocked tea tent! We hope that many of you will join us in celebrating our lovely wood in the heart of Radlett, or if you wish to join us for our future volunteer days, you can contact us using the email address: [info@scrubbittswood.com](mailto:info@scrubbittswood.com)

Our next meetings will be held on:

Sunday 12 January

Sunday 9 February

Sunday 8 March

Sunday 26 April – 110th Celebration

Sunday 17 May

Sunday 14 June

Sunday 12 July

Aldenham Parish Council

# Winter Fair

at the Radlett Centre

Sunday 24th November 3 - 6pm

The Winter Lights switch-on  
will be at 4.30pm



Santa's Grotto  
Gift Fair  
Craft stalls  
Festive bar  
Mini fun fair

Rodeo Reindeer  
Food stalls  
School choirs  
and much,  
much more



Design By  
Sophie Perry  
Fair Field School  
Class 3 Blyton

[www.aldenham-pc.gov.uk](http://www.aldenham-pc.gov.uk)

The event is organised  
by Aldenham Parish  
Council







# Summertime Activities - 2019

Aldenham Parish Council (APC) was pleased to be able to offer free activities for children of different ages during the school summer holidays at the Phillimore Recreation Ground.

Each Tuesday in August organisers from Herts Family Centres provided 'Messy Play' for the under 5's in the children's play area. As well as this, there was the very popular 'Face Painting', 'Soft Play' and various 'Arts and Craft' activities too.

Out on the recreation ground field APEX - a company specialising in activities for young people - held a different themed morning each week for 5-12 year olds. The themes were, Battle Zones, Crystal Maze, Super Hero Olympics and Spy Academy. These fun sessions proved to be so popular that a waiting list had to be put in place. As well as these activities, APC were extremely grateful to Radlett Lawn Tennis and Squash Club, Radlett Cricket Club, Belstone Football Club, Tabard Rugby Club and Aldenham Golf Club for giving up their time to put on taster sessions of their sport during the morning. All those who took part thoroughly enjoyed themselves.

Along with all these activities, the local Police Authority and Fire Service came to engage with the community and allow children to sit in their vehicles and have some fun. Paula's Deli was kept busy selling refreshments and the Radlett Youth Council (RYC) had a stall selling small toys in aid of the Herts Air Ambulance. The RYC also took the opportunity to try and recruit new members and complete feedback forms.

Back by popular demand, 'Wild Play' sessions provided by Groundworks took place in Fir Spring Wood adjacent to the Rec. This highly enjoyable and well organised educational activity was fully booked each week.

Each Tuesday saw large numbers of children and parents turning out to enjoy the morning activities and with the weather being particularly kind on those days, it was lovely to see the Phillimore Recreation Ground full of happy smiling faces.



**Councillor Estelle Samuelson**





## ALDENHAM

GOLF AND COUNTRY CLUB

Aldenham Golf and Country Club offers a warm welcome to all, membership is the heart beat of the Club and underlining this is our member focused approach to our day to day business. Visitors are always welcome to use our Clubhouse and courses and we offer the same warmth and hospitality our members have grown to expect. The Club is a favourite venue for a number of regular visiting golf groups and our Dining rooms host numerous private events, from birthday parties to wedding and corporate dinners.

Seasoned golfers will really enjoy what the Club has to offer and those new to the game can progress at their own pace under the guidance of our Head Professional and Academy Coach starting their journey from practice ground course with our individual and group tuition. The club really does have something for everyone.

## TABARD



## R.F.C.

Tabard RFC were proud to support the summertime events organised by APC. It was great to see so many young people participating in the various activities on offer and generally enjoying themselves. As we kick off this 'Rugby World Cup' season we would be delighted to welcome any potential new players to Tabard where we cater for boys and girls from 5 to 15 years of age. Training is every Sunday morning starting at 10:30. Tabard also run 2 senior men's teams and a women's team. For anyone interested further details can be found on the website [www.tabardrfc.com](http://www.tabardrfc.com).



## Summer Success for RLTSC



Radlett Lawn Tennis and Squash Club is a highly regarded club with great facilities and a friendly environment for families to enjoy. The club has worked hard and invested in the facilities to ensure their quality. We have social events, club socials and many local teams. It is a place for everyone to come along and enjoy a game of squash or tennis. Our tennis and squash teams are known in Herts as being extremely strong.

But RLTSC has become so much more of late. The club has excelled in performance level sport and has a programme now that a top national sports centre would be proud of. This summer the club has won Maccabi Gold medals and county championships. We have players competing nationally and internationally. The club has just launched a daytime academy for juniors who are playing full time and we also have players who have achieved sports scholarships in the US. The club runs an apprenticeship scheme where young coaches can get an early start in their coaching career.

In July, performance coaches Laura Collins and Chris Martin, took 16 juniors to Madrid to experience Spanish academy tennis and competition. This has been organised by Laura for the past 4 years and has become an established activity for our juniors.

These achievements can be attributed to a proactive chairman who has set new visions for his committee. We have a coaching team who are all highly qualified and have credentials in performance sport. Jordan Miles, director of tennis, was tennis coach of the year 2017 and every coach in the team has experience of working with players up to national level.

This term we are increasing the activities at the club for adults so check out our webpage for more details at: [www.rltsc.com](http://www.rltsc.com)

Despite all the success, the club is ensuring it remains inclusive to all the community and we invite you to come and join us.

For a free assessment please contact Jordan on 07845039715. We have adult and junior sessions for everyone.



Hertfordshire's Family Centre Service brings children's centres, health visiting and school nursing together to provide a more joined up service for children, young people and their families from pregnancy through to when a child reaches 19. There are a range of different support groups, activities and services on offer for children and their families to help them be healthy, grow and develop.

Families can access available services from any Hertfordshire Family Centre, allowing parents and carers to fit sessions and services around busy family lives. For more information and to see our Autumn Activity Programme please visit our website [www.hertsfamilycentres.org](http://www.hertsfamilycentres.org) or follow us on Facebook <https://www.facebook.com/HertsMereFCS/>



Over the summer, members of the Youth Council were raising money for its chosen charity for the academic year, the Herts Air Ambulance. The Herts Air Ambulance relies on donations to continue its vital operations; it

delivers pre-hospital emergency medical service and rapid transport for people across Essex and Hertfordshire. The Youth Council raised £103.57 during the four Summertime Activity days at Phillimore Recreation ground by selling sweets, bubble wands and bouncy balls and looks forward to raising even more over the rest of the academic year.

As ever, the Radlett Youth Council has begun this academic year by saying some goodbyes. The Youth Council has been well served by Leah Vallins and Sam Kramer as co-chairs in the last year and we thank them for all their hard work, especially in their successful fight for the expansion of the Oyster Card to Radlett.

This year, the Radlett Youth Council is chaired by Jacob Hougie and vice-chaired by Ethan Katz; the secretary is Tamzin Wolfson; and the publicity officer is Rufus Barnett. We hope that over the next year we'll be able to continue to represent the young people of the Parish of Aldenham and work closely with the council.

In particular, we hope that the information from our annual survey can be acted upon, that the campaign for Oyster Card fares be brought closer in line with those for Elstree & Borehamwood and to take part in the upcoming Festival of Culture in Radlett 2020.

We hope to expand the Youth Council's membership so that the baton can once more be passed on. If you are interested in joining the Radlett Youth Council please email [community@aldenham-pc.gov.uk](mailto:community@aldenham-pc.gov.uk)

Jacob Hougie & Ethan Katz

Chair & Vice-Chair of the Radlett Youth Council

## Aldenham Parish Council and Herts County Council combine to improve the High Street in Radlett

One of the constant comments that are made to Councillors is that the High Street appears very shabby. The street lights were last painted in 1999 when Herts County Council undertook a project in the Borough where each of its High Streets would have its own unique colour scheme. This would include lighting columns, signs and street furniture. In Radlett this was a burgundy red colour. All the lampposts, benches etc along Watling Street where the shops are were painted in this colour.

Some twenty years later the colour has faded, and many residents have asked if consideration can be given to updating the paintwork, and in some cases a different colour has been requested.

Over the last six months Aldenham Parish Council have been liaising with Hertfordshire County Council, and in particular County Councillor Caroline Clapper, to ascertain if they would consider repainting the furniture. They have agreed to undertake the works after Aldenham Parish Council voted to fund the scheme alongside County Councillor Caroline



# What's On...



Remember to check the Aldenham Parish Council website for all up to date events and meetings  
[www.aldenham-pc.gov.uk](http://www.aldenham-pc.gov.uk)

## Sunday 3 November at 6.30 pm

Christ Church. 'Service of Commemoration' in memory of loved ones who have passed away. If you wish to add a name please contact 01923 859963. Refreshments after the service.

## Sunday 10 November

REMEMBRANCE SUNDAY: see page 14 for details



## Tuesday 12 November at 8pm

Radlett Music Club Concert. The award winning ELYSIUM BRASS QUINTET at the Radlett Centre. Tickets £16.00 from the box office. Further details: [www.radlett-music-club.co.uk](http://www.radlett-music-club.co.uk)

## Wednesday 13 November



Radlett Horticultural Society AGM, 7.30 pm. Vision Hall, followed by a talk – subject to be announced (check RHS website) All welcome. For further details and membership enquiries please see our website [radlethortsoc.co.uk](http://radlethortsoc.co.uk)

## Wednesday 20 November

Radlett Scoiety & Green Belt Association Christ Church Vision Hall. Doors open at 7.30 pm. AGM followed by our Speaker, Oliver Dowden MP on local issues. Guest Adrian Waite – Head of Planning, Hertsmere Borough Council. Refreshments available.



## Sunday 24 November

Radlett Horticultural Society Store in Scrubbits Park Road closes at 12 noon for the winter break – last chance to stock up on bird food!

## Sunday 1 December 2019. 11 am to 3 pm

Christmas Market at the National Animal Welfare Trust, A41, WD25 8WT.

## Sunday 1 Dec at 6pm

Christmas Lights Switch On and firework display – David Press, 33 Battlers Green Drive. All proceeds go to the charity Hospice Care

## Saturday 7 December at 7 30 pm

Phoenix Concert Band

Start your seasonal festivities early! The popular Phoenix band (which rehearses in the Vision Hall every Thursday evening) is holding its annual Christmas concert.

It will take place in Christ Church and will feature a variety of music, including festive tunes.

Tickets on sale at the door from 7 pm (£7 adults, £5 concessions, children under 16 free) and light refreshments will be on sale during the interval. All proceeds to Keech Hospice ([www.keech.org.uk](http://www.keech.org.uk))

## Sunday 12 January 2020 at 3 pm



Radlett Music Club afternoon concert for all the family. The Radlett Centre. JOHN LENEHAN 'Piano Music and all that Jazz'. John plays classical works inspired by the jazz idiom. Tickets £16.00 from the box office. Children free. Further details: [www.radlett-music-club.co.uk](http://www.radlett-music-club.co.uk)



## Wednesday 5 February 2020. 8 pm.

Radlett Music Club concert. The BELL STRING QUARTET plays a classical concert including pieces by Brahms and Haydn. Tickets £16.00 from the box office. Further details: [www.radlett-music-club.co.uk](http://www.radlett-music-club.co.uk)



St. John the Baptist Church, Aldenham  
Entertainments Committee  
and  
Radlett Rotary Club  
Invite you to our



## ANNUAL CHRISTMAS VARIETY SHOW AND SUPPER

at St. John's Church, Gills Hill Lane, WD7 8DF

Master of Ceremonies: Nigel Rogers

Accompanist: Stephen Hose, Guitar: John Rudlin

Singers: Julia Beynon, Jill Gillam, Martin Fountain  
Hilary Pearce, David Rose, Sarah Tyler

on Saturday 7th December 2019 at 7.30 p.m.

Tickets: £15.00 to include supper

To book your tickets please telephone 01923.857017  
or email: [julia.beynon@ntlworld.com](mailto:julia.beynon@ntlworld.com)

Please bring your own alcohol.

Soft drinks, tea and coffee provided.

Please mention any special

dietary requirements when booking.

Tables of 8 but any number welcome.



Clapper with a budget of £25,000 being allocated.

### What colour?

The next thing to decide is what colour the street furniture should be, as several ideas were promoted when this was first discussed.

To gauge public opinion, Aldenham Parish Council staff will, over the next few weeks paint three of the columns that lead into The Radlett Centre, different colours. One will be dark green, one the original colour of burgundy red and one

black. Members of the public will then be able to vote for their favourite colour, either by e-mailing the Parish Council Manager on [manager@aldenham-pc.gov.uk](mailto:manager@aldenham-pc.gov.uk) or through an on-line survey money which will be advertised on the Aldenham Parish Council website: [www.aldenham-pc.gov.uk](http://www.aldenham-pc.gov.uk). The final results will then be announced and the contract signed with the work commencing in Spring/Summer 2020.

Cllr Garry Walton

Apex 360 are experts in providing physical activity opportunities for all. From Sports, Dance, PT instruction and our popular inflatable activities, we can offer a range of solutions for schools or local community groups. The Apex head office is based in Hertfordshire. We can also offer delivery across all of Herts, Bedfordshire, Bucks, Berks, Middlesex and Cambridge.

In the Summer of 2018 and in 2019 we were delighted to offer some of the younger, local Aldenham Parish children the opportunity to take part in a number of Apex activities heavily subsidised by the Aldenham Parish Council.

Numbers soared from around 40 per Tuesday in 2018 to over 100 a day in 2019. It was fantastic to see so many local children taking part in the Apex run activities from Soft play, the Apex inflatables and Capture the Flag formats - there was something for everyone to get involved with.



## Griggs Homes



September 2019: We are delighted to announce that local upmarket housebuilder Griggs Homes will be the main sponsors of this year's Christmas Tree and interactive illumination. The Radlett based company will be providing an eye-catching 25 foot Christmas tree complete with fairy lights and decorations which will provide a focal point for the fair.

Griggs Homes will also be sponsoring the much anticipated interactive polar bear which will be in place at The Radlett Centre and encourages residents to take the funniest family photographs with the polar bear and enter our prize draw.

Chris Griggs, Director of Griggs Homes said, "We are thrilled to be supporting Aldenham Parish Council and this year's Christmas Tree/ Polar Bear illumination and are all looking forward to seeing the entries for the funniest family photographs. The competition is open to all and we will be giving prizes to the best photos over the festive period.

"We also look forward to seeing everyone at the official Christmas tree lights switch-on which is taking place on Sunday 24th November at 4.30pm."

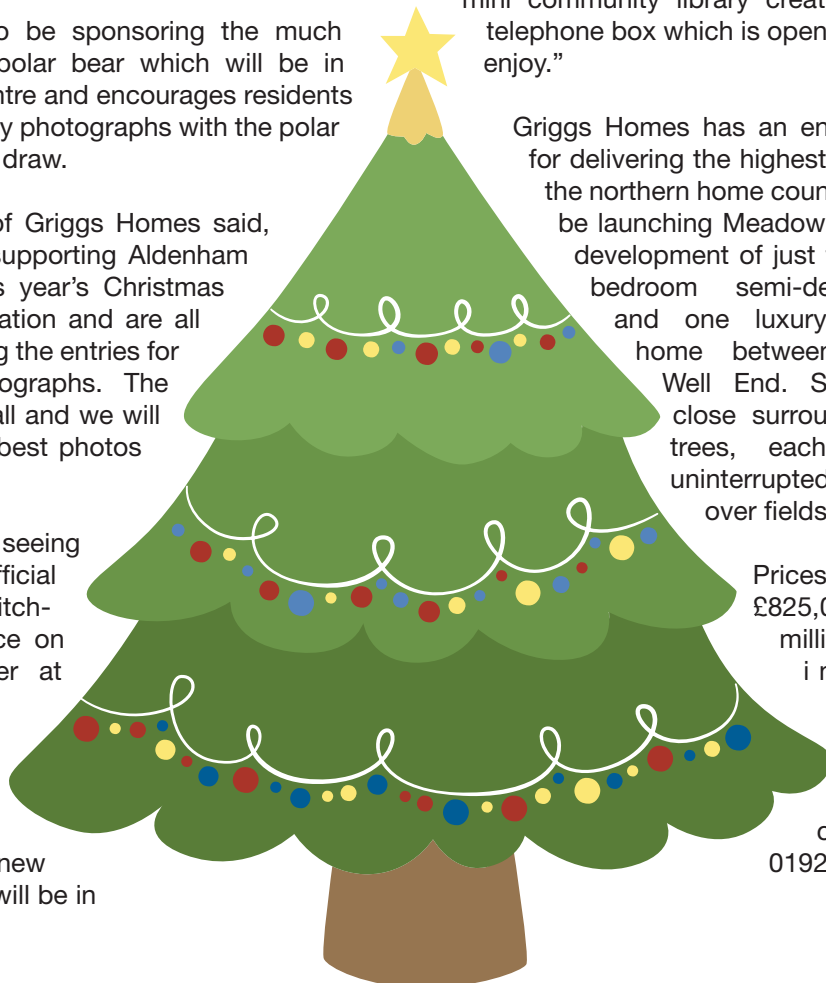
Griggs Homes is also currently working with Radlett Archive Group on plans to create a new Radlett Museum which will be in

the grounds of the Village Institute.

Chris continues, "We are extremely committed to working with the local community around our head office and the areas in which we build and look forward to working on Radlett museum. We have also recently help set up Little Shenley Library, a new mini community library created in a disused telephone box which is open for all to use and enjoy."

Griggs Homes has an enviable reputation for delivering the highest quality homes in the northern home counties. It will shortly be launching Meadow View, an elegant development of just two, stylish three bedroom semi-detached homes and one luxury four bedroom home between Shenley and Well End. Set in a private close surrounded by mature trees, each property has uninterrupted views to the east over fields and parklands.

Prices range from £825,000 to £1.15 million. For more information about Meadow View please visit [www.griggshomes.co.uk](http://www.griggshomes.co.uk) or call 01923 852 322.







## Edge Grove School Becomes Official Local Community Recycling Centre for Radlett and Surrounding Areas

On 10 June 2019 independent prep school, Edge Grove in Radlett, was awarded the status of an official local recycling centre for Radlett and the surrounding areas.

The school itself has always recycled plastic, metal, cardboard and paper through the Hertsmere waste services route, but more recently it began looking for ways to recycle 'harder to recycle' waste too, such as crisp packets, toothbrushes, dental product packaging, latex gloves and bread bags. This has led to the school gradually expanding its waste streams, and becoming an official recycling site for the region. Edge Grove can now accept waste products not just from its own pupils and their families, but also from members of the general public.

Alex Evans, wife of Headmaster at Edge Grove, Ben Evans, is spearheading the campaign for the school, "We've always been an eco-friendly school but we wanted to do more than just 'our little bit' for the environment. Earlier in the year the recycling of crisp packets became very topical with the Walkers initiative taking the country by storm. We knew this was something we could help with too. We looked into it and initially signed up for the recycling of single use plastics

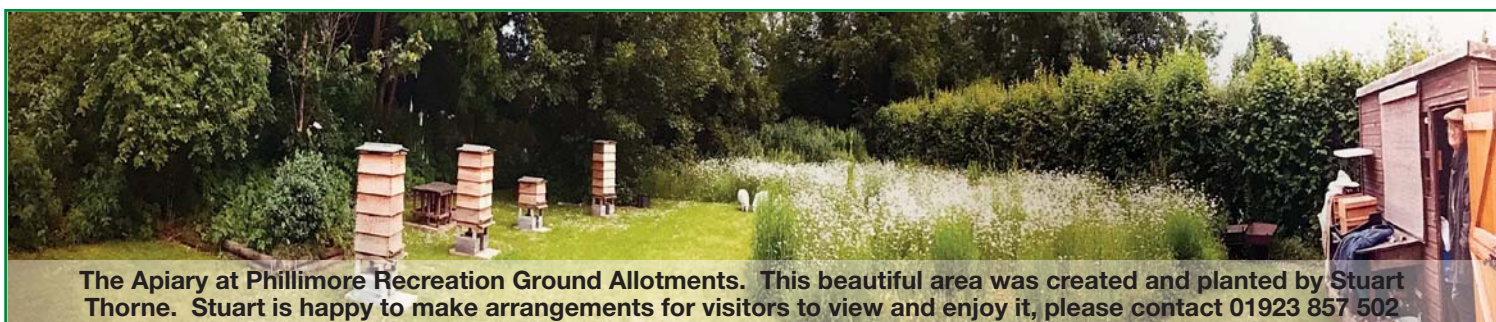
such as crisp packets and latex gloves, which we collect in collaboration with Holroyd Howe, our on site catering company. We've gradually expanded what we can recycle and can now accept all manner of harder to recycle plastics."

Edge Grove is also currently working towards retaining its Green Flag Status with the Eco Schools Initiative. The initiative has 10 topics to work on including biodiversity, waste, transport, water, energy and healthy living. The Eco Committee at the school has come up with a number of exciting plans including fair trade activities, building recycling bins from recycled materials, selling fruit and vegetables at break time, planting wild flowers, as well as wildlife and plant surveys.

Alex added: "The children and parents are very supportive and keen to fly the 'eco-flag' for the local area, which is great and it is so rewarding to be making a difference to the wider community too. We are also pleased to confirm that we'll be coordinating the recycling at the Radlett Festival this year."

## Coming Up - Coffee and Carols at Edge Grove School

Edge Grove will once again be hosting a Coffee and Carols concert for the over 65s and it will take place on Monday 9 December at 10.30-12. There will be free transport, if required, and if you would like to attend this event please call Manisha on 01923 856433 or email [community@aldenham-pc.gov.uk](mailto:community@aldenham-pc.gov.uk).



The Apiary at Phillimore Recreation Ground Allotments. This beautiful area was created and planted by Stuart Thorne. Stuart is happy to make arrangements for visitors to view and enjoy it, please contact 01923 857 502

## Allotments

Allotments are an important and valuable community resource, providing local residents with an opportunity to grow their own vegetables and fruit that they perhaps would not otherwise have the facility to grow at home.

Aldenham Parish Council has allotment gardens adjacent to Phillimore Recreation Ground in Radlett which are available at an annual rent of £35 for a full sized plot or £18 for smaller, half plots. They can be rented individually or with a friend on a joint tenancy basis. The RHS also have several of the allotments which they have converted to more accessible, mini plots to include residents for whom the maintenance of a larger plot is not possible.

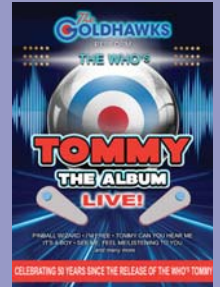
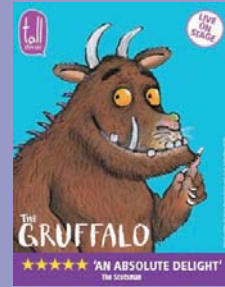
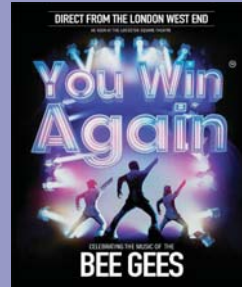
The new allotment season commenced on 1 October and we still have some availability for the coming year.

If you are interested in growing your own food, spending time outdoors, regular exercise and making new friends, allotment gardening could be the hobby for you.

For an application form or to find out more please come into the Parish Office or contact Wendy McLean, Open Spaces Officer by email [openspaces@aldenham-pc.gov.uk](mailto:openspaces@aldenham-pc.gov.uk) or telephone 01923 856433.



www.radlettcentre.co.uk



## NOVEMBER

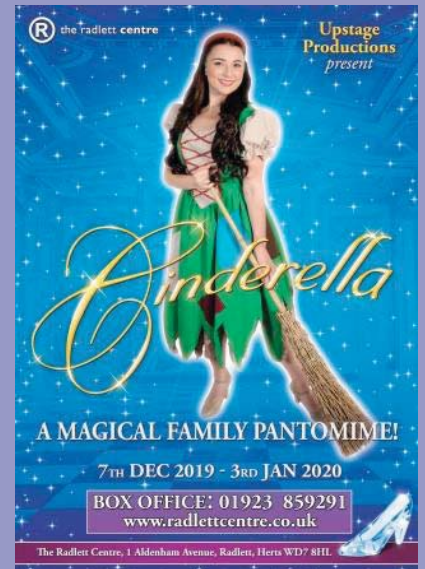
Wed 6 – Sat 9 9 to 5 The Musical 7.45pm  
 Tue 12 – Elysium Brass Quintet 8pm  
 Wed 13 – Liza Pullman Sings Streisand 7.30pm  
 Thur 14 – Gruffalo 1.30pm  
 Fri 15 – Gruffalo 10.30am & 1.30pm  
 Thur 21 – Sat 23 High School Musical 2.30pm & 7.30pm  
 Sat 30 – Nick Ross Orchestra 7.30pm

## DECEMBER

Sun 1 – As if by Magic 7.30pm  
 Sat 7 – Fri 3 Jan – Cinderella

## JANUARY

Thurs 9 – The Elvis years 7.30pm  
 Sat 11 – Think Floyd 7.30pm  
 Sun 12 – John Lenehan Piano Music and all that Jazz 3pm  
 Wed 15 – Hoagy  
 Thurs 16 – Totally Tina  
 Fri 17 – David Starkey  
 Sat 25 – The Pasadena Roof Orchestra 7.30pm  
 Wed 29 – Stephen K Amos 7.30pm  
 Thurs 30 – You Win Again 7.30pm



## Aldenham Art Festival - 12 – 15 September 2019

The Aldenham Art Festival, now in its third year, was by general acclaim the biggest and best yet. There were more artists and more artworks than ever before. Over 80 artists drawn from a wide area of Herts, Bucks, Beds and North London as well as our local regulars from Aldenham, Radlett, Bushey and Watford entered over 500 artworks, both framed and unframed. The expansion of the browser section gave artists greater opportunities to exhibit their mounted but unframed work, in addition to the three framed pieces allowed per artist. The browsers proved to be popular both with the artists and with the visitors. Sales of artwork nearly doubled in value on last year to nigh on £9k which in addition to revenue from sponsorship, artists entry fees, donations and income from refreshments and sundry items suggests that when the final accounts are produced this year's event will be the most profitable yet. Both artist's income and the Church Fabric Fund will benefit accordingly.

Not only was the Festival a financial success but it was an enjoyable weekend in line with our commitment to make the Church a centre for social and cultural activities for all members of the community. Guests included the Worshipful the Mayor of Hertsmere, Cllr Alan Plancey, at the Preview, Oliver Dowden MP on Friday and various other guests over the weekend. The valuable sponsorship of Aldenham Golf and Country Club was supplemented by additional sponsors, Oliver and Akers Estate Agents, London Colney, and Daniel Morris Wealth Management, Radlett.

Others contributed anonymously. The colour brochure was largely financed through the advertisements of local businesses and professional organisations. We thank them all.

The team of volunteers from the Church did sterling work at every stage of the operation including the provision of cake, tea, coffee and other refreshments. Others worked tirelessly transporting and erecting the display boards and hanging the paintings. The bell ringers provided a peal of bells to open the Festival on the Preview Night and flowers in the Church added to the ambience of the occasion. Stewards provided a warm welcome throughout the weekend. Our Treasurer has been working overtime. It really was a team effort.

Perhaps the greatest debt of all must go to the artists. Numerous comments were made about the quality and variety of the work on display appealing to all tastes. We look forward to another great show next year. For those who sold work, congratulations. For those who did not sell, stick with us, we are on the way up!

Our thanks and congratulations to all for a fantastic result. Ken Haslar & Richard Wheeler Art Festival Organisers, St John the Baptist Church Aldenham







## Girls Guides In Radlett

This year, 2019, Girlguiding Radlett District celebrates its own Centenary. Our first unit, 1st Radlett Guides, was opened in 1919.

We have already enjoyed a special Thinking Day Event and Service in February, as well as countless Sleepovers, Pack Holidays and Camps for all of our sections.

Karen Clout earned a Guiding Good Service Award for her work on the Community Poppy Making last November, and Nicola Day was recognised with a Long Service Award by Girlguiding Hertfordshire.

We had a stall at the Radlett Festival in June to showcase the fantastic opportunities that young people and leaders have access to, as a part of Girlguiding.

As a District we were fortunate to spend a wonderful summer's afternoon at the beautiful Schopwick House in Elstree, where members and their families celebrated with lots of outdoor activities. Dad and Daughter teams challenged each other on rope courses, gun runs, campfire cooking, trails, traditional camp skills, ropemaking and even maypole dancing. Dads couldn't believe how much fun there was to be had. One father told us "When I was doing this, I thought "Oh no, do I have to?" but its been a fantastic afternoon!" 1st Radlett Scouts also sent a few members along to join the event and set up a brilliant trail around

the churchyard where members were able to find the gravestone of Sir Percy Everett, who started the first Scout Troops in Hertfordshire and lived at Schopwick House. Families went on to share picnics and birthday cake, whilst leaders and special guests were served with a traditional afternoon tea provided by one of the leaders.

Two of our leaders, Annabel Jennings and Charlotte Day were then presented with their Queen's Guide Awards. This is the highest award a young adult in Guiding can achieve and includes components of personal skills, outdoor challenge, residential, and of course community action. We are very proud of them both!

Our units also spent the summer months completing a relay walk of the Parish Boundary and came together again mid September at Well End Campsite for a weekend of adventurous activities including climbing, archery, wood whittling, outdoor cooking and assault courses.

Three of our leaders recently took on and completed the Yorkshire Three Peaks Challenge. Apart from slightly sore feet, the 43 kilometre challenge up and down the peaks of Whernside, Pen-y-Gent and Ingleborough took teamwork to its limits and left the leaders with a huge sense of achievement. Girlguiding offers so many opportunities to its members, as well as fun and friendship.

Girlguiding Radlett District welcomes new members and volunteers. Please contact us if you are interested in learning more.

**Nicola Day District Secretary [nicola1.day@hotmail.co.uk](mailto:nicola1.day@hotmail.co.uk)**



## Radlett Neighbourhood Plan Update



I would like to take this opportunity to update you about the Radlett Neighbourhood Plan (RNP) which went out to consultation earlier this year. Following this consultation (officially called Regulation 16), Hertsmere Borough Council appointed an independent planning inspector, Nigel McGurk, to scrutinise the RNP to ensure that it met all the necessary regulations.

Nigel McGurk called a public hearing which was held on 16th October 2019. He invited representatives of the RNP Steering Group, Aldenham Parish Council and Hertsmere Borough Council to attend, where he asked questions about the plan for his final report. We are now awaiting the outcome of that report but are hopeful that this will be the final process and that the examiner will inform Hertsmere Borough Council that they must now hold a Referendum on the plan which the residents of Radlett will be asked to vote upon.

We therefore ask that you look out for the date of the Referendum and that you come to a Polling Station to vote. In order for the RNP to be adopted, 50% of those

who vote need to be in favour of it.

If passed, the RNP will be an important document that will become Planning Policy. Planning Officers in Local Authorities, as well as Planning Committees and Inspectors, will have to take the RNP into consideration when deciding planning applications. It will also set out objectives about the future vision of Radlett with regards to its infrastructure, recreational, medical and educational facilities.

Hopefully, Radlett can then move forward in the knowledge that the local community has a say in maintaining the area as a verdant place to live, work and enjoy for many years to come.

Thank you for your patience and contributions in order that the Radlett Neighbourhood Plan could get to this stage.

**Estelle Samuelson**

Radlett Neighbourhood Plan Steering Group



## REMEMBRANCE SUNDAY SERVICES SUNDAY 10 NOVEMBER 2019



Painting of Memorial by Judy Weisser

The remembrance will begin with a church service at Christ Church, Watling Street at 9.30am followed by church congregation and uniformed walking from Christ Church to the war memorial at 10:15am.

The community, other churches and synagogues will join us at the Radlett War Memorial by 10:30am for a multi-faith Remembrance Service which will start at 10:45am so that we come to join the nation in two minutes, silence at 11:00am. The service will be led by faith leaders and wreaths will be laid by our community organisation led by a representative of Hertsmere Borough Council on behalf of Her Majesty, and the Chair of Aldenham Parish Council.

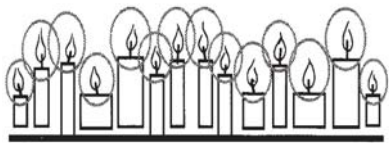
After the service all are invited to Radlett Reformed Synagogue for refreshment. Come and join us to remember those who made the ultimate sacrifice.

Rev Javaid Iqbal  
Vicar of Radlett

### Christ Church & St John's Church, Radlett

and the Revd Javaid Iqbal  
invite you, your family and friends to our

**Annual Service of Commemoration  
at Christ Church, Watling Street, Radlett WD7 7JJ  
on Sunday 3 November 2019 at 6pm**



*A special service of worship with prayer  
for those who wish to remember loved ones,  
and commemoration of those who have died*

Refreshments will be served after the service  
If you would like the name of your loved one(s) read aloud,  
please inform the Parish Office (01923 859963)  
or write the name clearly on the list in the church when you arrive

### Service of Remembrance at Letchmore Heath War Memorial

**10th November 10.30am**

## Christmas Services at Aldenham Parish Church



**Sunday 15 Dec 6.30pm** The Nine Lessons  
and Carols

**Christmas Eve 4.00pm** Christingle Service

**Christmas Eve 9.00pm** Christmas Eve  
Communion

**Christmas Day 8.00am** Holy Communion

**Christmas Day 10.30am** Christmas Crib



## CHRISTMAS 2019 AT CHRISTCHURCH

**Sun 1 Dec** 8.00am Holy Communion  
11.00am Sunday Praise and Prayer Service

**Sun 8 Dec** 8.00am Holy Communion  
9.30am Choral Communion  
11.00am All Age Communion (Toy Service)

**Sun 8 Dec** 3.00pm Carols in the Community at Phillimore Centre

**Sun 15 Dec** 8.00am Holy Communion  
11.00am Sunday Praise and Prayer Service  
6.30pm Churches Together Carol Service

**Sun 22 Dec** 8.00am Holy Communion  
9.30am Choral Communion  
11.00am All Age Communion

**Christmas Eve - Tuesday 24 December**  
4.00pm Children's Crib Service  
6.30pm Candlelight Carol Service  
11.30pm Midnight Communion

**Christmas Day - Wednesday 25 December**  
8.00am Holy Communion  
10.00am All Age Christmas Communion

## CHRISTMAS 2019 AT ST. JOHN'S

**Sun 1 Dec** 9:30am Holy Communion

**Sun 15 Dec** 9:30am Holy Communion

**Christmas Eve** 4.30pm Children's Crib service

**SUNDAY 29 December 2019**

10.30am Team Holy Communion Service at St John's, Radlett.  
Aldenham Radlett and Shenley Team plus Radlett United Free Church come together in worship

No services at Christ Church

## HAPPY 100TH BIRTHDAY TO A VERY SPECIAL LOCAL LADY



**Edie Oakley outside 11 Downing Street**

Edie Oakley, pictured above, celebrated her 100th birthday on 27 October 2019.

Edie was born in Osbourne Cottage, Station Road, Radlett in 1919. She has lived and worked in Radlett all her life. Her mother came to Radlett with her sister Maud, in 1912, to work at the Harpenden Laundry in Station Road, now the Corn Works. Edie attended Christ Church Girls School until the age of 14 years. The school then became Radlett Youth and Community Centre at the bottom of Loom Lane. In recent years it has been redeveloped into lovely residential homes. Edie was first employed in the offices of the Co-op, situated opposite Barclays Bank. She moved on to a lampshade factory at the rear of The Oakway shops, which was owned by the Ward family of Watford Road. The lampshades were sold in Cutters, an electrical shop in Watling Street.

Edie met her husband, Laurie, also Radlett born and bred at Radlett Cinema, which then became Radlett Hall and is now the Radlett United Synagogue. Edie was one of two usherettes and cashiers. Laurie was the projectionist. They married in 1942 on Boxing Day.

They began their married life in Battlers Green Drive and Edie still lives in the same house today. Their son, John was born in 1949 but very sadly died of leukaemia aged 10 years.

In 1959, Edie and Laurie began fund raising for Leukaemia Research, now Bloodwise, and to date they have raised a staggering £242,710.18.

In recognition of her work, Edie attended a special presentation at 11 Downing Street and was given a £1000.00 cheque for the charity and a certificate from Baroness Ros Altmann.



The photo pictured left is a hand and arm with the name Bloodwise printed on it. Several other charities have these wonderful statues on display. They are featured on an inside wall at University College Hospital.

Jan Adams



## 1st Radlett Scouts Celebrates Centenary



This year 1st Radlett celebrated its Centenary. 1st Radlett Scouts was officially registered on 16 May 1919, although it is commonly believed there were Scouts in Radlett prior to this. The Group was set up by Jack Nash as Scoutmaster assisted by Charles Cuddiford. Both of them are believed to be part of

a group of boys from Radlett who walked to 1st Elstree (one of the oldest groups in the country set up by Sir Percy Everett – Lord Baden-Powell's right-hand man) each week to get involved with Scouting.

The Group celebrated with a range of events, some jointly with Radlett District Girlguiding, who also mark their Centenary this year. 1st Radlett also had a competition within the Group to design a special Centenary woggle to mark the occasion, which was won by Barney, which all members were given.

On Tuesday 21 May we held a Group Centenary Celebration Evening marking our Centenary for members in the Group. Here we took a Centenary Group Photo with all the current members and also cut a Centenary Cake for all to enjoy. On Saturday 29 June 1st Radlett Scout Group marked its Centenary with a Celebration Event. The Group invited back all past members to celebrate this achievement.

1st Radlett was delighted to welcome relatives of Jack Nash including his daughter, Jennifer Nixon, and two grandchildren, marking his importance in the history of our Group. 1st Radlett also welcomed a large number of former leaders including one travelling from the Isle of Man, one from Felixstowe and many from all across the country as well as those who remain locally.

1st Radlett rejoiced with the weather on the hottest day of the year, and luckily with the event based at its headquarters Kent Lodge in Scrubbits Wood were able to keep cool.

Guests were served afternoon tea, and many stayed for an evening barbecue. Attendees met up with old friends and reminisced about their Scouting days. Inside our headquarters many photo albums and scrapbooks were left out with other historic documents and a picture slideshow, representing the 100 years of 1st Radlett. Music from across the years was played to guests, with the top chart songs from each of the 100 years being played.



In the early evening our Group President, (the now late) Ron Worthy – who had been involved with the Group for 56 years - spoke welcoming guests and marking the Centenary of the Group. Jack Nash's grandson Rod also spoke about memories of his grandfather and on Jack's involvement in 1st Radlett. He represented his father Reverend David Nash, Jack's oldest son, whose distance from us and age prevented him attending. He also presented the Group with a photo of Jack from his later life, when he had moved away from Radlett. Guests also enjoyed a Centenary Cake after singing the Group Happy 100th Birthday. Jack's daughter Jennifer Nixon officially cut the cake. In February we joined with the Guides to celebrate Founders Day (known by Guides as Thinking Day) where the members took part in activities based on International Guiding and Scouting followed by

a celebration of 100 years of Girlguiding and Scouting in Radlett.

On the 16 June we also joined with the Guides for an event at Schopwick House in Elstree Village, the home of Sir Percy Everett, with themed old Scouting and Guiding activities for the members. Former Radlett Girlguiding and 1st Radlett Scouting members and leaders were invited to come and visit the activities and partake in a Celebration of Girlguiding and Scouting with the cutting of a cake and an afternoon tea for guests. To see more visit our website [www.1stradlettscouts.org.uk/centenary](http://www.1stradlettscouts.org.uk/centenary).

We would like to take this opportunity to pay tribute from 1st Radlett to Ron Worthy who sadly passed away recently. He was involved with 1st Radlett since he moved to Radlett in 1963. He undertook a range of roles over his nearly 60 years involved including being Assistant Scoutmaster, Venture Scout Leader, Group Site Manager, two spells as District Commissioner, Assistant District Commissioner for a range of roles, District Nights Away Advisor and more recently District Vice President and Group President.

**Jackie Glover**  
Group Scout Leader



## Requesting residents' views on managing the Shenley Hill and Craigweil Avenue traffic

The ever-increasing population of Hertsmere has been driving up traffic on our Radlett roads. It is certainly evident around the Shenley-Radlett "artery" of Shenley Hill as well as on Craigweil Avenue, used by drivers as a shortcut from Shenley and the Northern parts of Radlett via Theobald Street to Borehamwood.



However, what causes concern is not just the ever-increasing traffic, heavy and constant at peak times, but also the speed of drivers. Neither Shenley Hill nor Craigweil Avenue currently benefit from lights, zebra crossings or speed indicators, yet both roads are frequently crossed by pedestrians, particularly during rush hour.

I would be interested to know if residents think Craigweil Avenue would benefit from a zebra crossing at the junction with Newberries Avenue, as that is where numerous pupils cross, often without parents, on their way to/from school. Newberries Primary School encourages older pupils to walk to school on their own, and a safe crossing of what is becoming an increasingly busy road with often speeding drivers should, I believe be prioritised by the Highways department of the Hertfordshire County Council.

Similarly, in addition to numerous dog walkers, significant numbers of secondary school pupils cross Shenley Hill in order to get to and from the bus stops near the junction with Williams Way and The Avenue. Many of them struggle to navigate through the fast-moving traffic. The Highways department has already done some research into speeding on Shenley Hill, however no solutions have been implemented as yet. Again I would be interested to know residents' views on whether, there should be a zebra crossing there as well, perhaps coupled with a speed camera.

I would therefore like to ask Radlett residents, especially those who live in the proximity of Shenley Hill and Craigweil Avenue, and in particular residents whose children attend Newberries Primary School or the secondary schools serviced by buses stopping on Shenley Hill, to email me with their views.

Email: [Cllr.Przemek.De.Skuba@aldenham-pc.gov.uk](mailto:Cllr.Przemek.De.Skuba@aldenham-pc.gov.uk)



The Aldenham Women's Institute welcomes new members and those just wanting to visit. Ladies can come and learn new crafts, meet new friends, attend county events, campaign for local issues or WI resolutions and take part in a wide variety of activities. Announcements about activities available are made at our meetings and can be found in our Federation Newsletter, which contains details of forthcoming events. This is available to members by annual subscription. We also pay for our membership annually which entitles us to a WI Life Magazine that tells us about things that are going on

countrywide.

Our Meetings are always held on the 2nd Tuesday of each month from 7.30pm until 10pm. They take place at the Aldenham Preparatory School, Aldenham Road, Elstree, WD6 3AJ. We have a different activity or speaker every month. There is a raffle, second hand bookstall, refreshments at a small cost and plenty of time to socialise.

The planned activities and speakers from October are:-

October – Cabi Clothes – Helen May bringing some clothes from this American brand to sell.

November – Speaker – Dr Vim Sivasanker talking about Mental Health.

December – Christmas Meeting

January – Desert Island Discs (this involves the members taking part and no outside speaker)

February – Speaker - David Wass talking about Shoplifting and its prevention.

For further information please contact Diana Mitchelmore on 01923 251436.

## OUTSTANDING PHOTOGRAPHS ON DISPLAY – NOT TO BE MISSED

Park Street Camera Club's outstanding display of some amazing and eye-catching photographs by our extremely talented photographers will be on display and for sale in the Tennyson Room, St. Stephen Parish Centre, Station Road, Bricket Wood and in the Lounge Room at Greenwood Park.

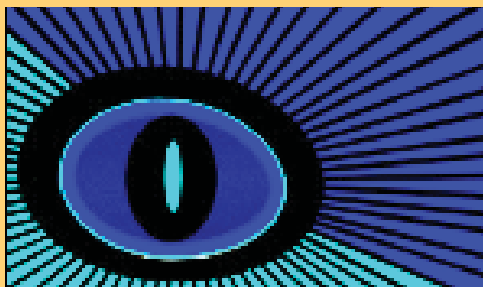
ENTRY IS FREE for the next six months.

The display covers every aspect of photography including portraiture, nature and wildlife, landscape, creative, birds, artistic floral designs, travel and much, much more.

All images are mounted to fit a frame size of 50cm by 40cm, and are priced at £30 each, or 4 for £100, which includes a donation to Emmaus St Albans, our nominated charity. To see previous photographs which have been on display and also available to purchase, please go to our website on: [www.parkstreetcameraclub.com](http://www.parkstreetcameraclub.com) – link at the top 'print sales'. For further information or if you wish to purchase our photographs, please email [printsales@parkstreetcameraclub.com](mailto:printsales@parkstreetcameraclub.com). The Club meets on Thursday evenings at 8pm at St. Stephen Parish Centre, Station Road, Bricket Wood. We are an extremely friendly Club and you will be made very welcome on arrival.

Rosemary Wenzerul

On behalf of Park Street Camera Club



**Now on Mondays as well!**

**Computers and a Cuppa - Radlett**

**Mondays, 10.30am – 12.30pm**  
**Tuesdays, 2pm – 4pm**  
**Radlett Centre – Café**

Are you confused by computers?

With the help of our friendly and patient volunteers, these FREE, informal sessions are a chance to learn new IT skills in a friendly, supportive environment.

Call Christine on 020 8207 4504, email [engagement@communityhertsmere.org.uk](mailto:engagement@communityhertsmere.org.uk) for more information

**Communities 1st Hertsmere**  
Working with you to make a bigger difference

**Volunteer Centre Hertsmere & St Albans**

Registered Charity: 1127066. Company Limited by Guarantee: 6717968 Registered Address: 2 Allum Lane, Elstree, Herts WD6 3PJ

**Community Hub**

**Communities 1st Hertsmere**  
Working with you to make a bigger difference

**Hertsmere & St Albans TimeBank**  
Sharing time in our community

**Can you spare an hour?**

**Involved with a community group?**  
We offer a wealth of services for the voluntary sector

**Day Trips, Events and Family Activities**

**Come find your perfect volunteering opportunity**

**Volunteer Centre Hertsmere & St Albans**

**Travel Link**  
for people who have difficulties using public transport

**Computers and a Cuppa**

**Handyperson Service**  
serving the districts of Hertsmere and St Albans  
Gardening • Handy Person  
Housekeeping • Painting & Decorating

**Personal Development Courses**

**1st and 3rd Tuesday from 1:30pm – 4.30pm**  
**Meeting Room 1, Radlett Centre, WD7 8HL**

**Free Computer and a Cuppa sessions - Tuesday 2pm – 4pm**

Tel: 020 3559 3559    [us@communities1st.org.uk](mailto:us@communities1st.org.uk)

Communities 1st is a registered Charity. Registered Charity No: AWAITING. Company No: 11875362. Registered Office: 2 Allum Lane, Elstree, Hertfordshire, WD6 3PJ





# Ron Worthy - A life of Community Service

Aldenhams Parish Council were sad to hear that one of its former chairman passed away on 1 September 2019 following a period of illness.

Being part of and giving back to the community was why Ron was a parish councillor. He was elected in May 1999 as Parish Councillor for Aldenhams Parish Council, Aldenhams East ward. With his knowledge of the village, he was an invaluable member of all the committees, especially planning and recreation grounds. As he liked the outdoors he had walked all the footpaths in the parish, and would come into the office with little notes where he had noticed some litter or tree that had fallen down that needed the attention of the Groundstaff.

Ron served on the Council for 16 years, half of it as Chairman. He negotiated with a local benefactor to fund a chain of office for the Chairman, and was the first recipient. Often wearing it proudly at functions such as Radlett Light Opera Society performances at The Radlett Centre where he represented the Council.

He worked on a number of projects during his time, including installation of new playground equipment and a multi-use games area at Phillimore Recreation Ground. He was also keen that Aldenhams Parish Council engaged with its residents through celebration events such as the Queen's Diamond Jubilee picnic in the High Street and publication of the 'Around Radlett' magazine, on which he was still a member of the working party after he stepped down from the council.

Ron first came to the area through his work as a policeman, having become a police cadet. His first posting as a newly qualified Police Officer in the Metropolitan Police was to West End Central. This was followed by a stint in Edgware and then to Radlett, to which they also moved house. Ron became involved in the local community as his 'office' was the Police Box which stood in the middle of the village.

He became an Assistant Scoutmaster with 1st Radlett Scouts before transferring to Senior Scouts and starting up a new mixed Venture Scout Unit. He was also District Commissioner for Elstree District for two terms of office.

Ron also worked with police cadets, the Royal British Legion, Victim Support and administrator for Hertfordshire Scouts. Most people will probably remember him as



the commanding parade marshal, on Remembrance Sunday. He transferred this skill to another annual parade at Windsor Castle where he tried his best to teach new Queen's Scout Award recipients from across Hertfordshire how to march.

With all the facets of local life that Ron was involved in, his always cheerful nature, like an off-duty Father Christmas around the village, he will be sorely missed.

**Peter Evans**

**(helped by Michael Worthy and Jackie Glover)**

## The Radlett Policing Team

### CRIME updates:

In September we had :

- 5 Thefts from motor vehicles
- 3 Burglaries and
- 1 theft from a person.

### Tips to prevent burglary:

- Check all downstairs windows and doors are locked and secure before you leave or go to bed. If you are going out, lock upstairs windows too [if you remove keys, ensure you have a fire escape plan].
- Don't leave car keys, mobile phones, wallets or other valuables on window sills, in hallways or in any other visible place.
- Double-lock UPVC doors by lifting the handle and locking it to engage the security features.
- Use timer switches on lamps to give the impression someone is at home.
- Secure your rear garden: lock rear gates, securely lock sheds and garages, and keep tools and ladders locked away, as they could be used to break into your home.

### Tips to prevent theft from m/v:

- It might sound obvious, but make sure you lock the doors and shut the windows and sunroof whenever you leave your vehicle unattended.
- Always take the keys out of the ignition.
- Be aware of your keys.
- Never leave any valuables in your vehicle.
- Never leave vehicle documents in your vehicle.
- Use an approved steering lock or gear clamp.
- Consider buying locking screws kits to secure number plates which are targeted by criminals.
- If you advertise your vehicle for sale on an online web site, ensure that its number plates are covered over when photographed to avoid cloning of its identity.
- If you keep your car on the drive, you could consider having a 'dusk-till-dawn' security light fitted at the front of your house - thieves don't like to be illuminated.
- Noisy gravel on your drive can help deter a would-be thief, as they don't want to alert you to their approach.
- Always make sure your car is locked by trying the door before leaving it.

For more detailed crime prevention information, including a printable Home Security Self-Assessment, please visit the "Protect Your Home" section of our website: [www.herts.police.uk/ProtectYourHome](http://www.herts.police.uk/ProtectYourHome)



"Our Radlett Safer Neighbourhood Team (SNT), is made up of professionals and our first aim is to keep Radlett a safe place to live and see happy people around. Our SNT is a small team but in emergency we always get support of intervention teams based in Borehamwood. We are covering Radlett area and we support day to day activities. Most of the time one of us is in Radlett. PCSOs are your first port of call if you have a problem where you live or are concerned about anti-social behaviour or criminal activity in your neighbourhood. Your Neighbourhood Police Officers deal with issues that only those with full police powers can do, for example making arrests and stopping vehicles.

This summer we had a few of our operations in Radlett where we were checking traffic, signing OWL's (Neighbourhood Watch), visiting our local residents and small businesses in Radlett. As we all know, Radlett is safe place to live and during this summer we didn't deal with a lot of crimes but we did give a lot of advice to our local residents, and we tried to prevent as many as possible crimes around. Some of our local residents were complaining about speeding, parking in wrong places, bad language, animals etc. and we tried to find solutions for everyone.

We really enjoyed the summertime events at Phillimore recreation ground where we were introducing ourselves, showing our Police kits to our young residents, and we had few adults as well who were interested to get advice how to protect themselves and their properties.

Our SNT is always happy to book an appointment with any of our residents to come to your property and give you some crime prevention advice.

Next month we will continue our duties on Radlett streets. We will be signing our residents into OWL system. OWL (Neighbourhood Watch) is one of the biggest personal computer based and most successful crime prevention initiatives ever. It's based on the simple idea that you and your neighbours can help to reduce crime and create a safer and better place to live, work and play. It is also a means of keeping an eye on the vulnerable, elderly and disabled.

Also joining the Neighbourhood Watch Scheme is free and some insurance companies offer reductions on house insurance if you are a member.

**PCSO Tim Conway & PCSO Milan Boca**



## SOME HISTORICAL NOTES RADLETT IN THE PARISH OF ALDENHAM



Flint Cottages, Radlett, 1852

### **Flint Cottages built in 1852, drawing by Ted Barker**

Radlett came into existence as an isolated settlement within the ancient Parish of Aldenham. For administration purposes, it remains part of the Aldenham Civil Parish although it has been a separate ecclesiastical Parish since 1865.

The area of Aldenham Parish has remained substantially unchanged since Saxon times, when the land was mainly in the ownership of the Abbots of Westminster Abbey.

The first church recorded was Aldenham Church, built around 1250, possibly on the site of an earlier Saxon church and Aldenham village flourished. Following the Reformation and Henry VIII's closure of the monasteries, former abbey lands were sold off to the highest bidders and the community somewhat declined in an era of large estates and absentee landlords. Aldenham village today, is probably smaller than it was five hundred years ago. For residents, it is a relatively quiet place to live, with a beautiful Grade 1 listed church facing the village green, set in farmland with excellent access to local countryside walks.

The village of Letchmore Heath also has ancient roots. In the nineteenth century, it was by far the largest settlement in the Parish, housing mainly agricultural workers employed on local estates. It also had small-scale rural industries such as cloth-weaving and straw-hat manufacturing. By the end of the century, it had become the main shopping centre for the Parish. Today, its importance as the centre of the Parish has declined as nearby Radlett grew. The last shop disappeared some years ago.

The name Radlett appears to have evolved from the old-English word, 'rad-gelaete' meaning junction of roads. The original small nucleus formed where the route from Shenley to Aldenham crossed Watling Street, London to St Albans. The first recorded reference to 'Radelet' comes in 1453 and the first Parish register appeared in 1560.

During the nineteenth century, large estates were created, flanking Watling Street – Kendals, Newberries and Aldenham Lodge. Each estate had a large mansion house, other buildings were mainly small and housed land workers employed to help run the estates. The distinctive Flint Cottages facing the Red Lion are surviving buildings of this type. They were erected by the Phillimore family of Kendall Hall in 1852 replacing a mass of derelict, earlier farm buildings.

In the 1860s, the Midland Railway was extended southwards from Bedford to London, locally running through the valley of Tykeswater. A fully equipped station was built which initially served a very small number of local people travelling to and from London. The main use of the station seems to have been for handling small commercial freight, the majority from a minerals works, which had tramlines running to the station from a depot on Shenley Hill. There was also the

transportation of locally grown fruit and vegetables that were sold to restaurants and markets in London.

Christ Church was built in 1864 as a District Chapelry to serve Radlett and Cobden Hill. Despite the existence of the railway and the Parish church, residential growth was slow. By 1871, the population was 443 and only grew to 541 by 1891.

In the last decade of the nineteenth century, development in Radlett began to increase rapidly: farmland was sold for development and roads such as Park Road, Station Road, Aldenham Road, Aldenham Avenue and The Crosspath emerged. At the same time, Scrubbits Square was developed and workers' flats were erected by Robert Phillimore of Kendall Hall.

Between 1882 and 1905, new shops were gradually built along Watling Street. The Oakway shops came into being in the early 1920s. The land further south, between the Railway Inn, now the Broadwick and the Radlett Methodist Church, now United Synagogue was gradually filled with a variety of shops. The present shops along this parade were originally cottages with private front gardens, hence the parking restrictions. The population in 1921 was 2431. In 1935, Newberries Park Estate was sold for development and initially thirty-seven houses were erected, before the Second World War. The present estate was enlarged during the 50s and 60s; Newberries Parade Shopping Centre was extended in the 60s and 70s. During the post war period, Battlers Green housing estate was enlarged by the then Watford Rural District Council and was partially rebuilt and expanded in the 80s.

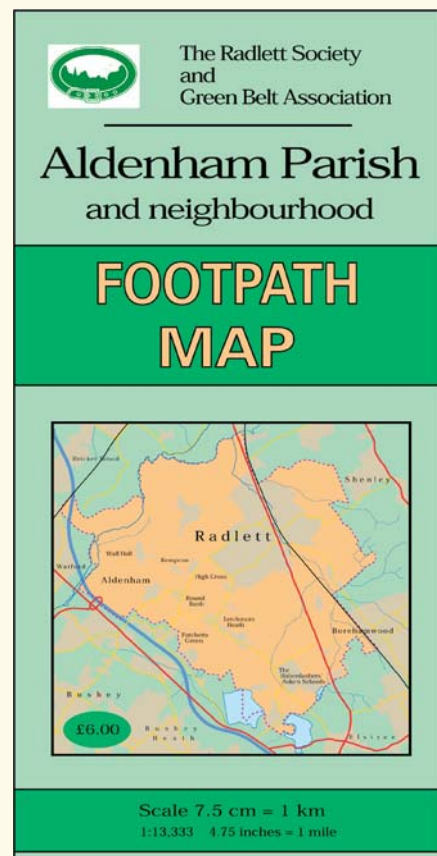
In the 1950s, the Metropolitan Green Belt was introduced and set a legal framework limiting further outward growth of the existing developed areas. As a result of this, Radlett is being re-developed from within, bringing many very large new houses, some even being squeezed into former gardens and back garden developments.

Today, we see the Parish of Aldenham and, in particular, Radlett, with its new Oyster Card access to frequent trains to London, St Pancras International, a much-favoured residential location, near the top of the national league for house prices.

Let's do all we can to support Parish life by volunteering and getting involved with its many local groups and associations, e.g. our local Civic Society / Radlett Society & Green Belt Association, the Letchmore Heath Village Trust, Aldenham Parish Council, Scouts/ Guides, Horticultural Society and many, many other groups.

Radlett Society and Green Belt Association Footpath Map, copies available from Aldenham Parish Council price £6.00.

Jan Adams





## News of the Radlett and District Museum



### MUSEUM PLANS COMING TO FRUITION

After well over a year of discussions and negotiations with local landowners, building suppliers, service providers, funders and the Planning Officers at Hertsmere Borough Council, the ambitions of the Trustees of the Radlett & District Museum (RADM) should soon become reality.

Planning permission has been granted for the erection of a building at the bottom of the garden of the Radlett Village Institute (RVI). A lease agreement has been signed with the Trustees of the RVI and Portable Offices will now commence the bespoke manufacture of the building. Local builders, Griggs Homes, will provide the necessary on-site groundworks and services.

Our thanks go to the providers of grants (a local benefactor, Hertsmere Borough Council and Aldenham Parish Council) and the Trustees of the RVI for their support.

Any residents who have items or objects they would wish to donate to the Museum, please contact Stuart Nagler on [r.nagler@btinternet.com](mailto:r.nagler@btinternet.com)

It is anticipated that the museum will be ready for a grand opening in 2020. Once opened the museum will be manned by volunteers and open to the public on certain days each week. **Watch this space!**



### Oyster card in Radlett

After a long campaign, I was delighted to open Oyster at Radlett station this summer. It was a pleasure to welcome the Transport Secretary, Grant Shapps MP, to the station for the ceremony and I enjoyed the chance to join the driver in the cab for the first journey into London!

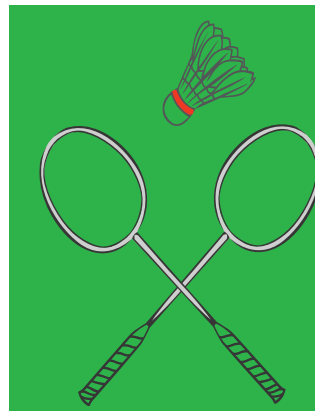
As readers know all too well, delivering Oyster has not been easy. We faced significant obstacles, infuriating delays but always kept up the pressure on Govia, TfL and the Department for Transport to honour this commitment.

Now it's in place, Oyster will allow passengers to travel much more easily by train and will give people greater flexibility over how they pay for their travel. I appreciate many people though are concerned about the fare caps in place under the new system.

Individual rail fares using the Oyster and contactless system will be cheaper than their paper counter-parts. However, regular passengers will find that their standard season ticket continues to be the cheapest option as these are already heavily discounted compared to the daily rate. I do understand concerns about fares and now that we have Oyster established, I will continue to press for better fares for people in Radlett.

Passengers deserve a modern, reliable and affordable service. We have made real progress in delivering this in the past few years, with the improvements to Thameslink, and the compensation I secured after the timetable chaos last Summer.

Oyster is another step in the right direction but of course there is more work to do. As always, if readers have any thoughts and concerns they want to raise with me as their local MP, don't hesitate to get in touch.



**Badminton on Tuesdays  
7-9 pm at Haberdasher's  
Girls' School, Elstree -**

**We are a friendly club of  
mixed ages and ability  
and welcome new adult  
members. Please contact  
Margaret on 01727 822248  
for more details.**



# If you are pregnant or a parent/carer of a child under 19 your local family centre would love to meet you.

## What happens at a family centre?

Hertfordshire's Family Centre Service brings children's centres, health visiting and school nursing together to provide a joined up service for children, young people and their families from pregnancy through to when a child reaches 19, offering a range of activities and services to help them grow and develop.

## Why should you register your family?

- By registering with a family centre you and your child/children can have fun, meet new people and learn together through activities.
- If you need help and support, the family centre will try and give you what you need.
- To give you the opportunity to be involved in all aspects of the family centre and help shape the services on offer.

For more information and to register visit  
**www.hertsfamilycentres.org**



Believe in children  
Barnardo's

Hertfordshire Community  
NHS Trust

InspireAll

YMCA

Hertfordshire



## Safe and happy at Tomten Kennels, Cattery and Grooming Salon



Take the worry out of holiday arrangements by ensuring that your pets are in safe, professional hands.

15 London Road, Shenley  
www.tomten.co.uk Tel. 01923 856264

## FREE SAFE & WELL visit

incorporating HOME FIRE SAFETY

"It won't cost you a penny and it could save your life"

- This service is completely free and is available to all Hertfordshire residents.
- The visit includes advice on aspects of health and wellbeing to help keep you safe and well.
- Visits are by agreed appointment only.
- Only uniformed staff will visit you and they will always use an agreed password and show an official ID card.
- We will supply and fit free smoke detectors where necessary.



Book online or call today  
www.hertfordshire.gov.uk/fire  
**0300 123 4046**

## SAFER NEIGHBOURHOODS

Reducing crime, catching criminals and keeping people safe



HERTFORDSHIRE  
CONSTABULARY

Website Address: [www.herts.police.uk](http://www.herts.police.uk)  
Neighbourhood  
Police Team:..... **01707 354192**  
Non Urgent Calls:..... **101**  
Urgent Emergency Calls:..... **999**  
Email:  
SNTBusheyandRadlett@herts.pnn.police.uk  
Follow on: [twitter.com/RadlettPolice](https://twitter.com/RadlettPolice)

## NHS

### Do you qualify for transport to your NHS appointment?

Patients normally make their own way to NHS appointments. Transport may be available to you depending on:

- Your medical condition
- Your mobility
- Your support needs.

To find out if you qualify call  
**0300 303 2101**

Please have your NHS number to hand when you call.  
You can find this on your appointment letters.

## Elstree household waste recycling centre

Elstree household waste recycling centre  
Radnor Hall, Allum Lane, Elstree, Herts WD6 3NN

Monday:	8am - 4pm
Tuesday:	Closed
Wednesday:	Closed
Thursday:	8am - 4 pm
Friday:	8am - 4pm
Saturday:	9am - 5pm
Sunday:	9am - 5pm

We're open all bank holidays except for Christmas Day, Boxing Day and New Year's Day.

## CITIZEN'S ADVICE BUREAU

Sessions are held every Tuesday from 10am to 1pm on First Floor, The Radlett Centre. Sessions operate on a 'drop-in' basis. For telephone advice please phone our Hertfordshire Adviceline on **03444 111 444**.

**citizens advice**

Large & small



*Gem'll fix it*

Just phone Gem on  
**01727 872136**  
Mobile: **07877 926130**  
[jemnihat@gmail.com](mailto:jemnihat@gmail.com)

Carpentry a speciality • Electrics • Decorating • Plumbing  
Flat Packs • Plastering • Tiling • Replacement Windows & Doors  
Bathrooms & Kitchens • Flooring - and outside work

Full Home Maintenance  
Park Street based  
Free estimates given  
References available



Virtually all jobs

## MASTER-CRAFT THEATRE SCHOOL FREE TASTER DAYS



We are excited to announce the launch of Master-Craft's weekend courses with an invitation to one of our FREE tasters. We believe age is no barrier to incredible performances

Master-Craft aims to provide high quality professional actor training for young people aged 12 to 21. Join us for a two-hour session held at the Elstree UTC in Borehamwood to find out more.

[www.master-craft.co.uk](http://www.master-craft.co.uk)



## Chas. A. Nethercott & Son Ltd. Funeral and Memorial Service

Fourth Generation Independent Family  
Funeral Directors Since 1911

As well as arranging funerals, we also offer:  
Pre-Paid Funeral Plans  
A Range of Memorials  
Grief Support through our partners, SAIF Care

20 ALDENHAM ROAD, RADLETT WD7 8AX  
**01923 852899**



**Golden Charter**

Smart Planning for Later Life

Emergency 24 hours service

[www.nethercott-funerals.co.uk](http://www.nethercott-funerals.co.uk)

email: [office@nethercott-funerals.co.uk](mailto:office@nethercott-funerals.co.uk)

Beauty Treatment | Aesthetics Facial Treatment | Dermaplaining  
Microdermabrasion | Holistic Treatment  
Skin Tags Remove / Age Spots Remove



Beauty Within  
by Ana

Located on Radlett High Street  
Beneath Health Store  
277 Watling Street Radlett, Herts, AL2 7LA  
[www.beautywithinradlett.co.uk](http://www.beautywithinradlett.co.uk)  
Tel: 07 542 236 252

JOELLE COCCO

CCCI

O-P-I

gelish

CryPen

products used in this venue

## The Oakridge Practice Footcare Clinic

HPC registered Podiatrist / Chiropodist  
01923 839 796

[www.oakridgepractice.com](http://www.oakridgepractice.com)

244, Radlett Road, Colney Street,  
St Albans, AL2 2EN

## Why live with pain?

Treatments available include:

Sports injuries, Nerve/Sciatica Problems, Neck & Shoulder Pain,  
Tennis Elbow, Frozen Shoulder, Hip & Groin Pain, Back Pain,  
Arthritic Pains & Rheumatism, Whiplash & Cranial Osteopathy,  
Pregnancy Aches & Pains.

**Radlett**  
Osteopathic Clinic

Maria Matthews

New Road, Radlett WD7 8LX

tel: 01923 852259

web: [www.radlettosteopathy.co.uk](http://www.radlettosteopathy.co.uk)



Radlett  
Physiotherapy

96 Watling Street, Radlett, Hertfordshire WD7 7AB

Tel: 01923 857338 Fax: 01923 857778

Website: [www.radlettphysiotherapy.co.uk](http://www.radlettphysiotherapy.co.uk)

Email: [info@radlettphysiotherapy.co.uk](mailto:info@radlettphysiotherapy.co.uk)

In pain? Don't be.

Come and see our specialist physiotherapists who can  
get you back to an active, pain free life.

**Physiotherapy treatment for:**

- Neck and back pain
- Muscle and joint pain
- Sports injuries
- Whiplash
- Headaches
- Arthritis and chronic conditions
- Work-related injuries

**Additional Services:**

- Pilates classes
- Over 60's fitness class
- Post op rehab
- Metafit classes
- Sports massage

INDEPENDENT,  
BESPOKE VETERINARY CARE

**Halian**  
Veterinary Centre

Ample Parking, Friendly Staff, Dog and Cat Waiting Rooms  
Free New Kitten/Puppy Checks, Dental Checks and Weight Clinics

Modern Facilities in  
a Traditional Setting

@ The Red Cow, 107 Radlett Road, Frogmore,  
Herts AL2 2LA [www.halianvet.co.uk](http://www.halianvet.co.uk) 01727 874700

**WRENS**  
ELECTRICAL

DOMESTIC AND COMMERCIAL  
ELECTRICAL CONTRACTORS

Lighting Heating Sockets • Distribution Boards Inspection  
Fault Finding Electrical Reports • L.E.D.'s T.V. Fuse Boxes  
Part P Regs Immersion heaters • 3-phase Installations  
Oven repairs • Cat 5/6 cabling NICEIC test and inspect



DOMESTIC  
INSTALLER

RADLETT 01923 854907

HARPENDEN 01582 762435

[www.wrenselectrical.co.uk](http://www.wrenselectrical.co.uk)

email: [martin.wren@sky.com](mailto:martin.wren@sky.com)

COMPLETE  
REWIRES  
& ALL ASPECTS  
OF ELECTRICAL  
WORK  
UNDERTAKEN

## Locksmith SERVICES

Your local approved Locksmith  
**CALL US FIRST FOR BEST PRICES**

**FULLY TRAINED LOCAL LOCKSMITHS**  
(WE ARE NOT A CALL CENTRE)

- Lock Outs • OAP Discounts • Boarding Up •
- Security • Consultants • Police Vetted •

**Fast Response Times -**  
Usually within Half An Hour  
24 Hours 7 Days A Week No Call Out Charge

St Albans 01727 400 012 Harpenden 01582 206 399 Radlett 01923 375 234 Redbourn 01582 206 008

## PHILLIMORE COURT COMMUNITY HALL AVAILABLE FOR HIRE

- Parties
- Classes
- Receptions
- Fully Equipped Kitchen
- Meetings
- Disabled Facilities
- Parking

Phillimore Place, RADLETT  
Herts WD7 8NN

Enquiries: Tel. 07776 162261

THE  
CORN  
WORKS

...the office environment you deserve



The Corn Works  
Station Road  
Radlett  
Hertfordshire  
WD7 8JY

Fully Serviced Self Contained Office Suites

t: 01923 851187

e: [info@thecornworks.co.uk](mailto:info@thecornworks.co.uk)

FREE LOCAL COLLECTION & DELIVERY  
CELEBRATING OVER 20 YEARS OF SERVICE IN RADLETT

**C.J. WATSON Ltd**  
Motor Vehicle Repairs & Servicing

SLADE FARM, BUTTERFLY LANE, ELSTREE  
Service and repairs to all makes of cars and light  
commercial vehicles petrol and diesel  
french cars a speciality



**Tel: 0208 953 0039**

[www.cjwatsonmotors.co.uk](http://www.cjwatsonmotors.co.uk)



Please recycle  
responsibly

Paper used is from  
well-managed/sustainably  
managed forests



Designed and Printed by Caprin Printers

Unit 2, Park Industrial Estate, Frogmore, St. Albans, Herts, AL2 2DR.

T: 01727 872 021 W: [www.caprin.co.uk](http://www.caprin.co.uk)

For all your print needs - give us a call!